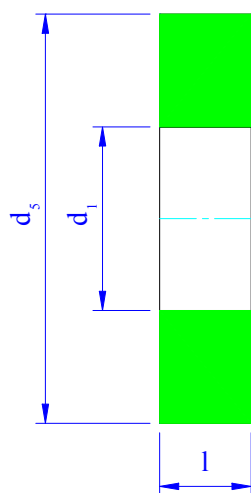


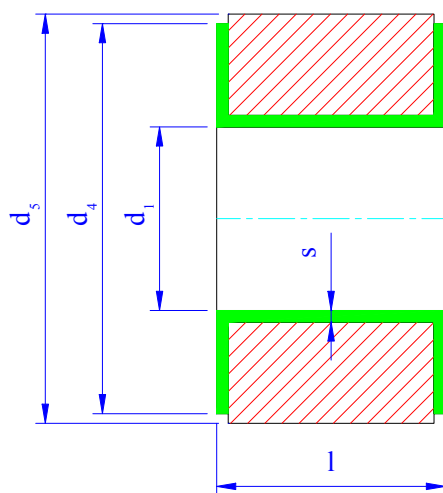
DISTANZIALI (DIN 2848 parte 11)

Specifiche del materiale: Forma "F": PTFE puro secondo ASTM D 1457-78 tipo IV e V
 Forma "G" + "H": St 35 (1.0112) con rivestimento in PTFE puro
 Condizioni tecniche di consegna: secondo DIN 2874

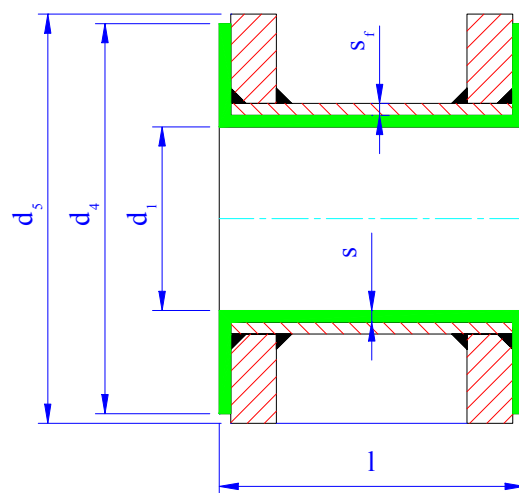
Dimensioni espresse in mm.



Forma F



Forma G



Forma H

DN	d ₁	s	s _f	d ₄	d ₅	l (forma F)	l (forma G)	l (forma H)
15	13	3	3,0	45	48			
20	16	3	2,6	58	60			
25	22	3	2,6	68	70			
32	31	3	3,0	78	82			
40	37	3	2,6	88	92			
50	48	3	2,9	102	107			
65	64	3,5	2,9	122	127	5 - 20	10 - 70	60 - 100
80	76	4	3,2	138	142			
100	101	4,5	3,6	158	162			
125	125	4,5	4,0	188	192			
150	153	5	4,5	212	218			
200	201	6	6,3	268	273			
250	254	7	6,3	320	328			
300	303	7	7,1	370	378			