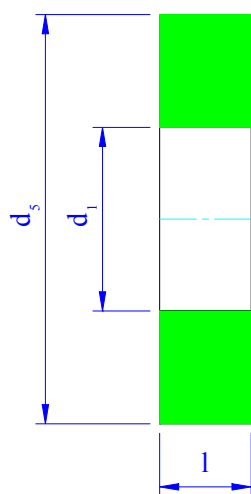


DISTANZIALI secondo ANSI B16.5, classe 150

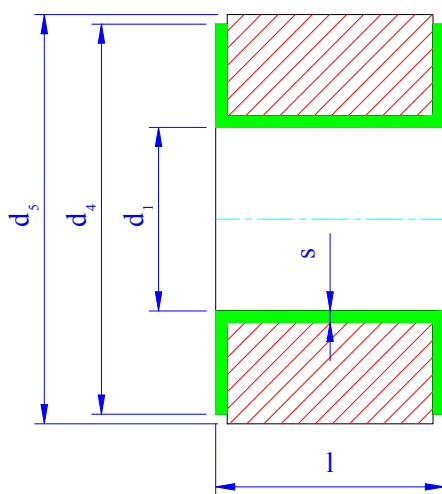
Specifiche del materiale: Forma "F": PTFE puro secondo ASTM D 1457
 Forma "G" + "H": ASTM A106 gr. B secondo ANSI B36.10
 API 5L gr. B secondo ANSI B36.10
 St 52.0 secondo DIN 1629

Condizioni tecniche di consegna: secondo DIN 2874

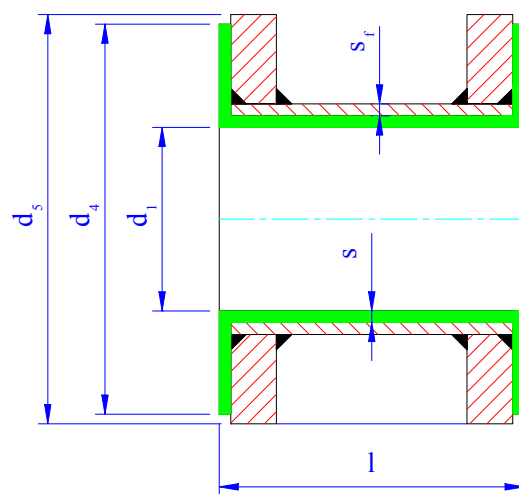
Dimensioni espresse in mm.



Forma F



Forma G



Forma H

DN	d ₁	s _r	s	d ₄	d ₅	l (forma F)	l (forma G)	l (forma H)
1/2"	9	3,0	3	35	44			
3/4"	15	3,0	3	43	53			
1"	19	3,38	3	51	63			
1 1/4"	28	3,56	3	64	72			
1/2"	32	3,68	3	73	82			
2"	44	3,91	3	92	101			
2 1/2"	61	5,16	3,5	105	119	5 - 20	10 - 70	60 - 100
3"	69	5,49	4	127	132			
4"	94	6,02	4,5	157	171			
5"	121	6,55	4,5	186	192			
6"	144	7,11	5	216	218			
8"	194	6,35	6	270	275			
10"	246	6,35	7	324	337			
12"	297	6,35	7	381	406			